

SanSiro Products

Modern Freestanding Bathtubs

INSTALLATION MANUAL

Soaker, water jetted, air jetted and hydro-spa jetted



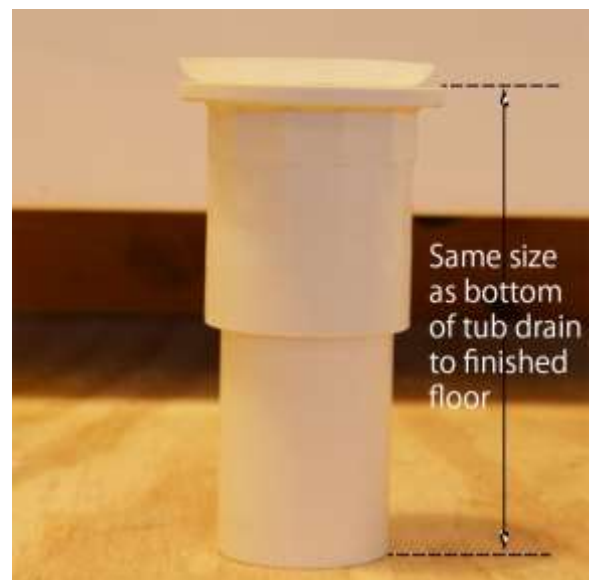
MA Code Accepted

Section 1

- 1.1 Feet – Level the feet adjusters to make the tub sit flat and firm on the floor
- 1.2 Measure the distance between the bottom of the drain and the finished floor.

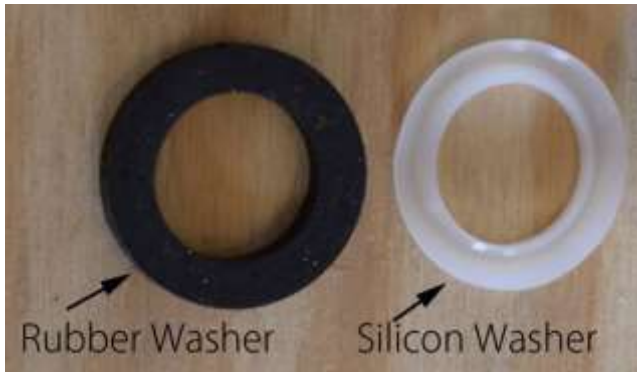


- 1.3 Cut the drain pipe to fit this height after it has the drain hub connected.



- 1.4 Ensure the floor drain hub is on the center required.

1.5 We supply two washers –



a black one that can be used if the drain hub is not perfectly square after installation. The black washer is designed to compress a little to compensate for an off of square fitted drain hub. This washer should however be used for small mis-alignments only, we would strongly recommend that the 1.5" drain floor pipe be re-fitted if it is badly off square.

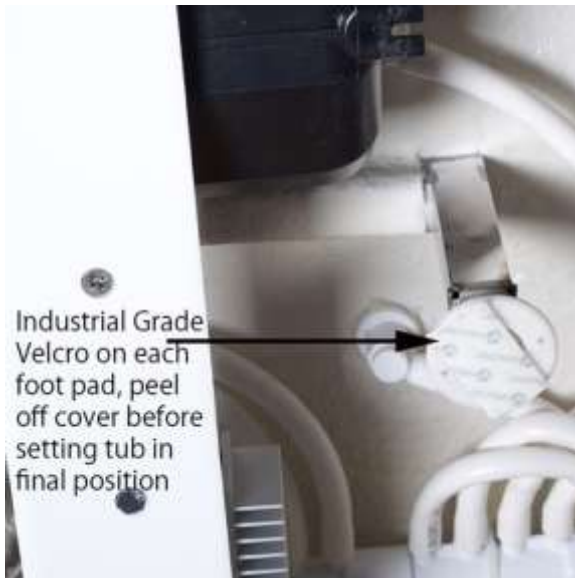
1.6 The silicon washer should be used in most cases.

1.7 For ease of installation, we suggest that a bead of silicon be laid around the flange head on the drain hub. This will keep the gasket from shifting during installation.

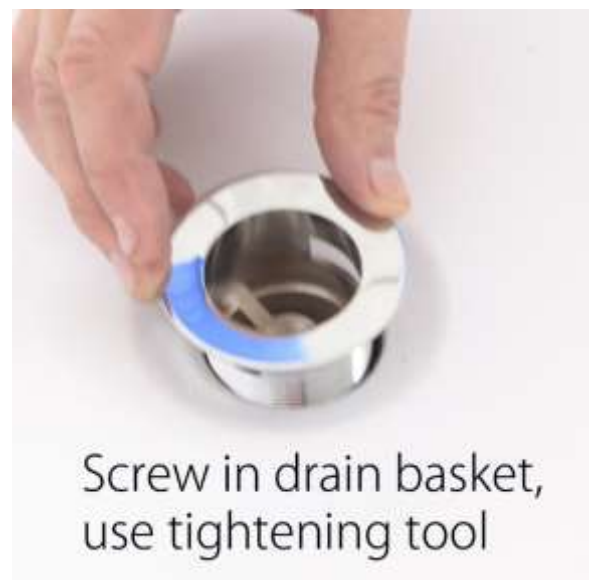
1.8 If using the silicon gasket, run silicon caulk into the radiused up facing area that connects to the tub base.

1.9 The drain is now ready to accept the tub.

1.10 Before sitting the tub into position, remove the thin cover from the Velcro on the leveling pads.

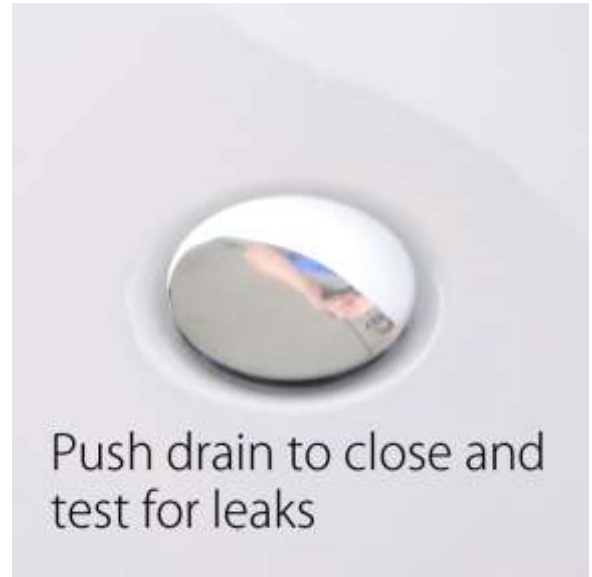


- 1.11 The Velcro will help prevent lateral movement of the tub if it is bumped, however, should access be required under the tub, two persons will be able to lift the tub straight up as the Velcro will release.
- 1.12 After placing the tub back on the floor with the tub drain held directly above the washer in the drain hub, check that the gasket on the drain hub is meeting the bottom side of the tub.



Apply plumber's putty to the edge of the drain basket and screw it down into the drain hub through the drain hole in the tub.

1.13 Screw in the pop-up cover.

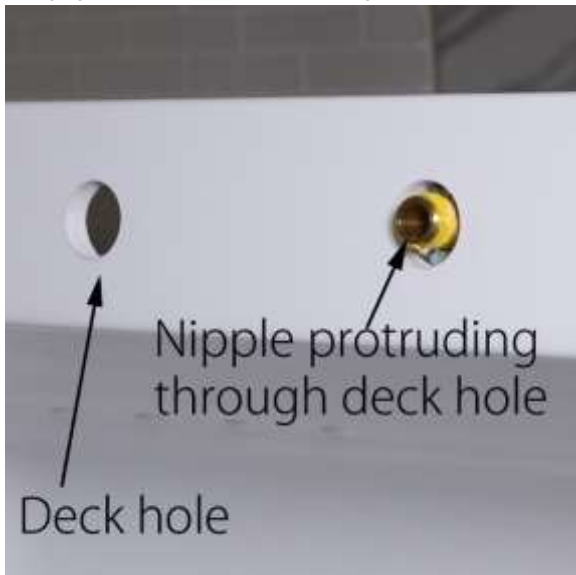


1.14 Test for leaks.

Section 2

If using a deck mounted faucet:

- 2.1 If you have purchased a deck mounted faucet from us, the tub will come with pre-drilled holes, you will not need to drill holes on the deck.
- 2.2 If you are using your own faucet, check to make sure that the deck area is wide enough for the escutcheons on the handles and any valves underneath.
- 2.3 Measure carefully and drill the deck to accept the stem or nipples that will protrude through the deck.



- 2.4 When drilling holes in the acrylic, we suggest you use a 1/16" pilot hole first. We then suggest you use a 1/8" drill to expand the hole diameter. We suggest you use a diamond tip hole saw to make the final hole. To avoid chipping or cracking the acrylic, we would advise that all drilling should be done on low speeds.

2.5 You are now ready to fit the faucet.

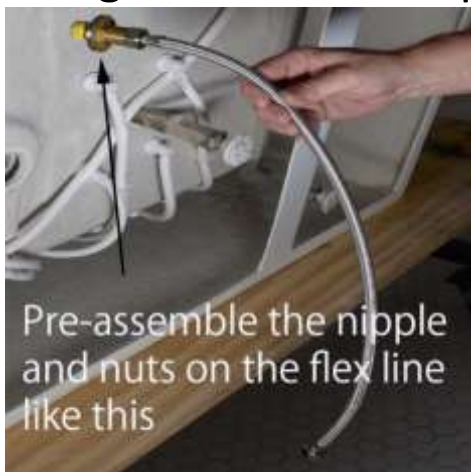
2.6 If you are using a faucet purchased from us, we will supply a tube wrench to attach the deck uprights to the nipple.



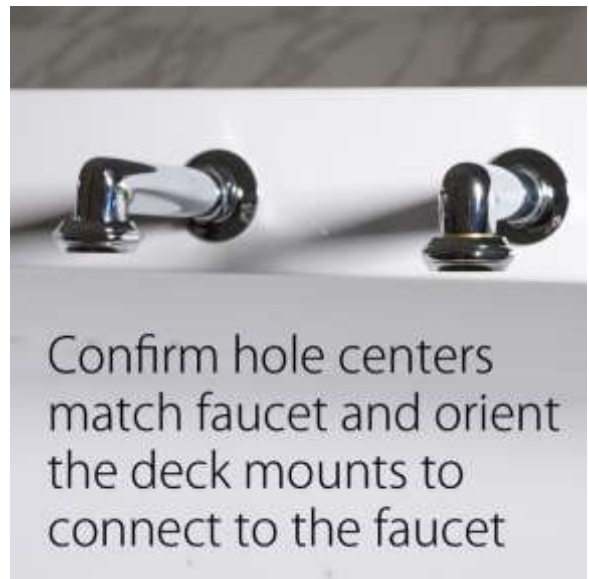
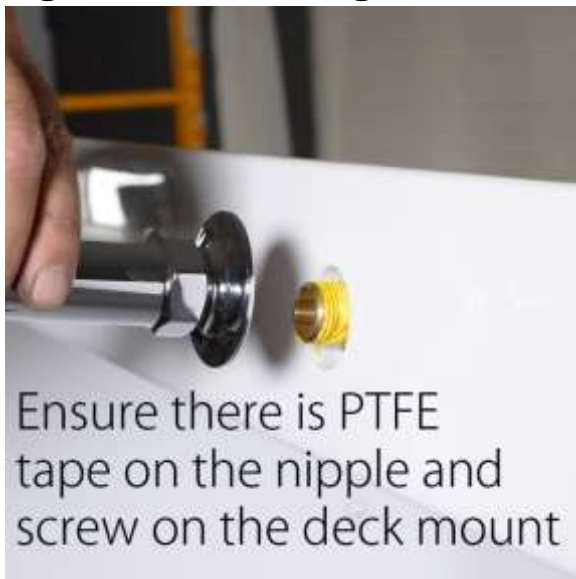
2.7 If you wish to use a faucet purchased elsewhere you may require a special tool that may or may not be supplied by the faucet manufacturer.

2.8 Our typical supplied faucet installation would be as follows:

2.9 Before connecting the flex line to the nipples, screw the fixing nut onto the nipple.

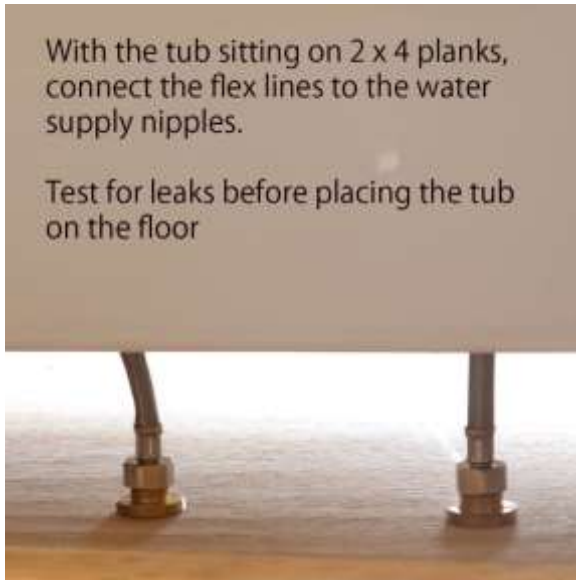


- 2.10 Connect the flex lines supplied to the nipple that fits through the deck hole.
- 2.11 Apply PTFE tape to the nipple thread that screws into the deck uprights. Place the silver washer on top of the brass fixing nut.
- 2.12 Push the nipple through the deck hole and start to screw on the deck upright.
- 2.13 Hold the deck upright in the correct orientation to accept the faucet and slip the tube wrench over the flex line and tighten the fixing nut.



- 2.14 Repeat with the other deck mount ensuring that the distance between the centers is the same as the faucet center. In the case of our faucet, that would be 7”.
- 2.15 Attach the faucet body to deck mounts.

2.16 Sit the tub on top of two 2"x4" planks and connect the flex line to the hot and cold nipples in the floor.



Test for leaks

2.17 Follow the final installation information in section 1.

Section 3

- 3.1 If your tub is a jetted version, it will have either one or two three pin 110v 15 amp plugs on it.
- 3.2 Should you choose to run the electrical connections under the tub, there is no need to drill holes in the tub walls for the electrical cords to connect. However, in this case, we would strongly recommend that the GFCI terminals for the plugs are easily accessible.
- 3.3 If you need to drill holes to allow the electrical cords to exit the tub, please follow drilling instructions as in Section 2.4.
- 3.4 All electrical plugs must be connected to a 15 amp 110v Ground Force Circuit Interrupter (GFCI) receptacle.

Section 4

Notes and Warnings

- 4.1 Before drilling holes in the deck, make sure that the faucet you have chosen will fit.
- 4.2 If purchasing any of our faucets, hole drills would be done at the factory.
- 4.3 At the drain side of our tubs, the integrated overflow protrudes slightly into the gap between the inner and outer shells. Take special care when drilling here to make sure the drill does not penetrate the overflow channel.

- 4.4 On center drain tubs, the faucet can easily be placed on the side opposite the overflow cover as the tub is totally reversible. This will allow the installer more room to access the deck from under the tub.
- 4.5 If you are able to connect the tub drain from below floor level, and do not wish to use a drain hub, we also supply a fixing nut to hold the drain basket in position.



Simply attach the chosen black rubber or silicon washer and fit as per Sections 1.5 through 1.8.

- 4.6 You can then use any downpipe to fit into a drain slip-joint or use a 90° head to connect the drain to any other drain location.